



## Single tank



### Benefits

- Dedicated to DMSO, NF52 or any remover
- Compatible to any solvents, Acetone, IPA..
- Chemical reclaim integrated
- Single tank for all chemicals
- HMI operation and Recipe management

### Secured

- Compliant with all majors Standard CE, SEMI,
- SEMI S2 EPO switch, level sensor
- Exhaust monitor with audio alarm interlocked with EPO
- Plenum liquid sensor interlocked

### Substrates

- Si, SiC, GaN, GaAs, Sapphire, Quartz
- 1 to 12" circular or square shape

### Optimized cost

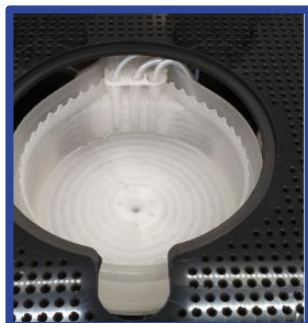
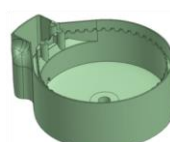
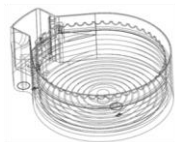
- Budget < 70 K€ for basic configuration
- Reduced chemical consumption
- Small foot print in clean room area

### Chemical management

- Removed or back side CDS
- Automatic filing and purging
- Waste chemical management integrated
- Chemical recirculation and filtration system

### PLC controlled

- Recipe automatic sequence
- Temperature bath setting
- Bath timer
- Chemical flow and pressure adjustment

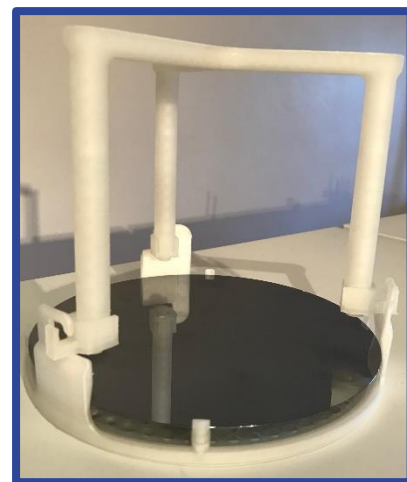


ATEX Certified



## Highlights

- Modular design
- Optimized foot print
- Easy access from grey area
- Easy installation, hook up and start up
- Circular or rectangular-shaped
- Dedicated tooling for substrate handling
- Wafer supporting
  - vertical, horizontal or tilted
  - 3 points contact
- Connectable to chemical management system, feed and bleed. (EVO Dis 1000 DMSO)



## Wet bench Lift off application and options

### Options

- spray gun DIW/N2
- In line concentration monitoring
- material PP, FM4910, Quartz, PVDF
- QDR, Ultrasonic
- Blender
- Premix tank
- Data logging
- Mechanical agitator
- Bar code reader



### Applications

- Semi-conductor
- Sensor
- Bio
- MEMS
- Solar
- Avionic
- Watch making
- Thin films